

Studio application information 2020

**The Aerie Creative
Ecology at Burrinja invites
applications for 3 year
permanent tenancies and
as well as casual and part
time tenancies in 2020.**



**aerie
creative
ecology**

About Aerie Creative Ecology

The Aerie Creative Ecology (ACE) is based at Burrinja in Upwey, and has been created as part of the 2019 redevelopment funded by Yarra Ranges Council and the Victorian Government's Growing Suburbs fund.

The intentions of ACE are to cultivate creative expression, promote creative economies and foster creative connections. ACE is a place that aims to be:

- a playful / creative / social / cultural space
- accessible to all
- inviting to a diverse community of artists
- a hub for artists and creatives
- a nurturing program that provides support at all levels
- a place to connect and collaborate with other creatives

Aerie Creative Ecology Program

Artist Professional Development, Creative Enterprise and Arts Business Support

As part of the ACE program, tenants will have access to the formal professional development provided by the centre each year. The Cultural Development Producer will coordinate the program, and will be available in an advisory role, supporting, mentoring and working with the artists throughout.

Other benefits

ACE tenants will also have access to the ACE digital hub, social activities, exhibition opportunities and income through facilitating workshops / classes and shop sales.



Studio information

Tenancy Period

Permanent and part time tenancy is for a maximum of three (3) years; in accordance with ACE policy, designed to encourage rotation of tenancy benefits and opportunities. License agreements are offered for an initial twelve (12) month period only, with two (2) further 12 month options available at the discretion of the Licensor (Burrinja).

Fees

Permanent tenancy fees range from \$75 - \$175 per week. Tenants will be invoiced monthly.

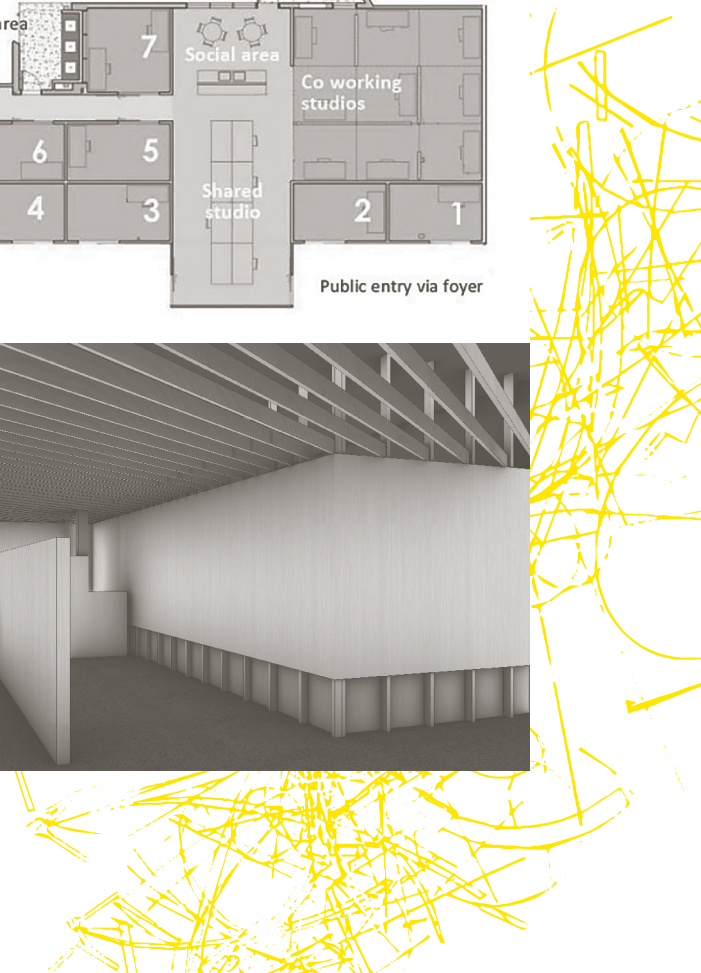
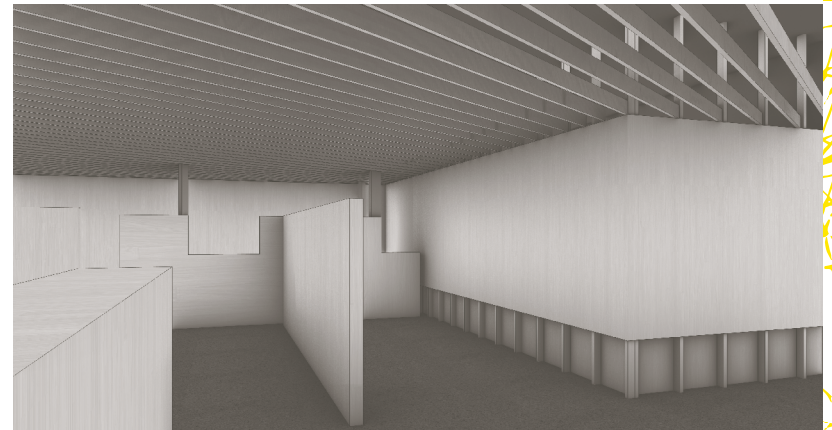
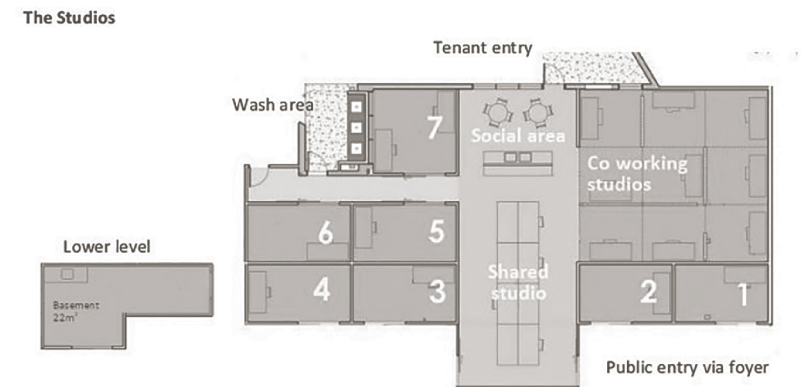
Access

Permanent and part time ACE tenants have 7 day a week (7.00am – midnight) access via the tenants' entrance with priority car parking at rear. Studios have wheelchair access via the foyer (excluding the Basement).

Studios

The studios have been purpose built with light and space in mind. All studios have LED lighting, light cork finish floors, white ply walls and glass frontage doors, heating and cooling (excluding Basement). All studio tenants have access to shared amenities including wifi, toilets, kitchen, social area, dedicated wash area, large shared studio space and free off street parking. Tenants can also make use of

other centre facilities such as the café, arts workshop, Burrinja galleries, Black Box function room, meeting rooms and foyer (extra fees may apply).



Studios 1 & 2 12m² enclosed independent studios with some natural light from sky light, glass sliding door entry open to the foyer and high visibility to the general public.

Studios 3 & 4 14m² enclosed independent studios with glass sliding door entry to the foyer, high visibility to the general public and some natural light.

Studios 5, 6 & 7 14m² enclosed and secluded independent studio with close proximity to dedicated wash area (small window in studio 7).

The Basement 22m² enclosed independent studio with own wet area (no natural light, ventilation, heating or cooling). Own entry, great for messy hands-on creatives or creatives that make loud noise. (Possible to be shared between two (2) artists or small collective).

Co-working Studios Semi partitioned desk studios (approximately 8m²) great for digital, literary or illustration based creatives, creative enterprises or arts businesses. There are nine (9) desks available for a mix of full and part time tenants.

The Shared Studio An open 58m² shared studio with movable desks, hanging area for work in progress and separate entry. Space for up to eight (8) artists to work simultaneously, available for part time and casual use only.

Key dates

Applications open: Friday 1 Nov, 2019

Applications close: Friday 6 Dec, 2019

Applicants notified within 4 weeks of closing date

Studio tenancies commence: April 2020
(pending build schedule)

More information and assistance

Information session: 6:00 - 8:00pm Tuesday 12 Nov RSVP
via the ACE website aerie.burrinja.org.au

Learn more about the Aerie Creative Ecology, get a site visit of the recently completed studios and get tips direct from Burrinja staff about how to apply for a 2020 studio.

Get in touch with us via email or phone, we are happy to answer your questions.

E ccd@burrinja.org.au

T 9754 1509

W aerie.burrinja.org.au



How to apply

Complete the online application form including the following information:

- Current Arts Practice or Creative Enterprise
- Outcomes and goals of studio use
- References
- Up to 10 images of your current work

Access application via the ACE website: under construction

Eligibility

ACE studios are generally suited to quiet and non-odorous forms of art, however, applications for noisy or odorous forms of art such as practices that require kilns, open flames, power tools, oil thinners and aerosol cans may be considered for the Basement Studio.

Artists must be over the age of 18 years to qualify for a studio or have at least one member of a collective as representative over 18 years.

Artists must have own public liability insurance.

After three (3) years tenancy, artists may re-apply but will not be guaranteed a lease renewal as preference will be given to previously unsupported artists.

Selection Criteria

Assessment criteria are weighted as follows:

1. Art form or creative enterprise proposal

- diversity of art form within the mix of existing and pending studio tenants.
- Artistic standing of applicant and artistic merit of the proposal

or

- Merit of creative enterprise proposal
- Potential to be sustainable creatively and financially over the three year tenancy

2. Professional capacity

- Formal training and education
- Engagement with the local art sector
- Exhibited or published work
- Received awards, grants or residencies

3. Value of a studio to the development of the applicant

- regularity of use - Commitment to use at least 3 times per week
- Benefit of the studio for the applicant's professional growth
- Applicant's desired outcomes from three (3) year studio tenancy experience



4. Commitment to Burrinja's vision and values

- Willingness to participate in Burrinja programming and events
- Willingness to engage in other local programming and events
- Willingness to abide by the code of conduct of the Building and directions of Burrinja management

In making the final decision, we also take into account the following factors:

- Support for locally based artists and creative enterprises
- cultural diversity
- gender diversity
- access for artists with disabilities
- Aboriginal and Torres Strait Islander heritage of applicants
- balance of emerging and established artists
- a mix of artforms

